



The Parapsychology of the Horse-Human Relationship



# **Horsensei Equine-Assisted Learning & Therapy (HEALTH)**

**Beverley Kane, MD**  
Program Director  
Medicine and Horsemanship  
Stanford University School of Medicine

[\*\*www.horsensei.com\*\*](http://www.horsensei.com)

**Manual of Medicine & Horsemanship**  
**Transforming the Doctor-Patient Relationship**



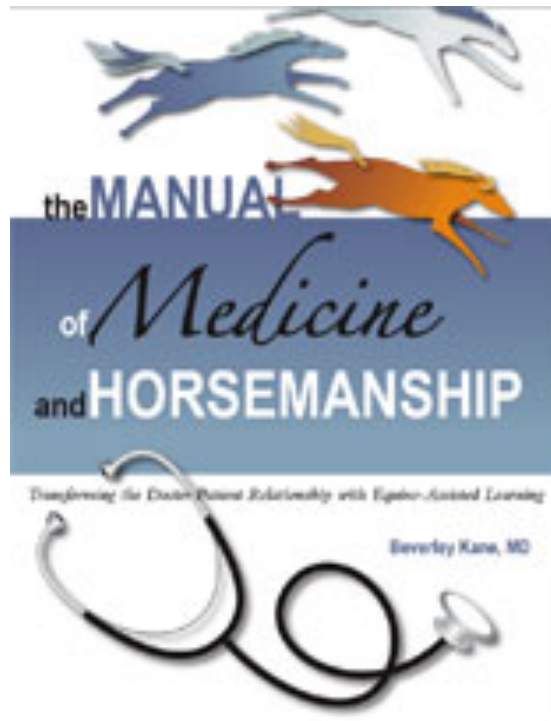
# Stanford Center for Research in Disease Prevention



San Francisco  
Parapsychology Research Group

## The Manual of Medicine and Horsemanship

*Transforming the Doctor-Patient Relationship  
with Equine-Assisted Learning*



Version 2.0

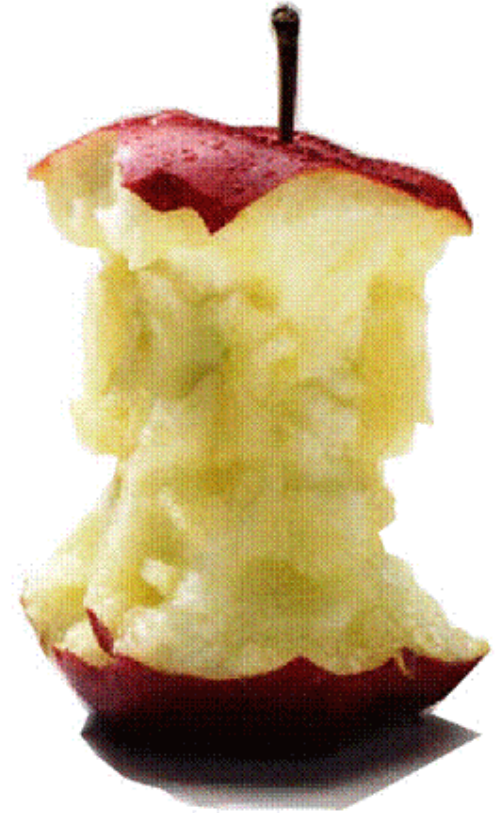


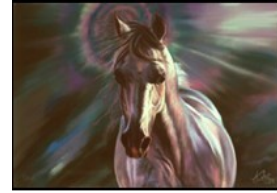
[Available Here](#)



# Core Message

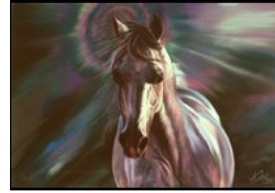
The most **powerful** and **transformative** phenomena in the horse-human relationship and in EAL/EAP/EGE encounters **can not and need not** be validated by Western scientific standards of objective proof.





# Overview

- 🐎 Why Horse-Human Parapsychology?
- 🐎 Proof and Beliefs—4 Ways of Knowing
- 🐎 Review of Western scientific methods
- 🐎 Review of parapsychology methods
- 🐎 Theoretical framework for psi phenomena
- 🐎 Remote Viewing (“ESP”) experiment

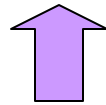
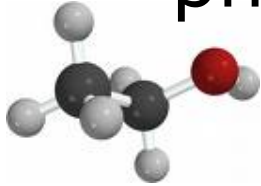


# Why Horse-Human Psi for EAL/ EFP/EGE ?

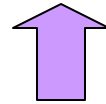
- 🐎 Certification, credibility, reimbursement
- 🐎 Over-reliance on objective proof
- 🐎 *Ignore-ance* of parapsychology

# Evidence/Proof Hierarchy

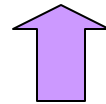
physical sciences



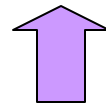
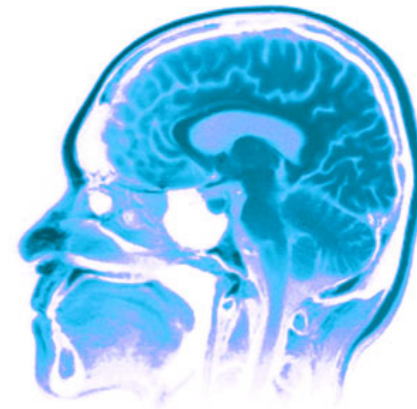
surgery



physiological medicine



psychiatry



psychology



# What is Proof ?



Consider: How do you decide whether to give your horse electrolytes in competition ?



- 🐎 Intellectual - Rational
- 🐎 Sensory - empathetic
- 🐎 Emotional - sympathetic
- 🐎 Intuitive - psychic



# Gold Standard Western Science

- 🐎 Large N(umbers)
- 🐎 Prospective
- 🐎 Long term
- 🐎 Randomized
- 🐎 Intervention-Control
- 🐎 Double Blind
- 🐎 Reproducible
- 🐎 Quantitative—statistically analyzed



# Parapsychology

- 🐎 Extrasensory perception
- 🐎 Telepathy
- 🐎 Psychokinesis
- 🐎 Clairvoyance/clairaudience/**clairsentience**
- 🐎 Survival of **consciousness** after physical death

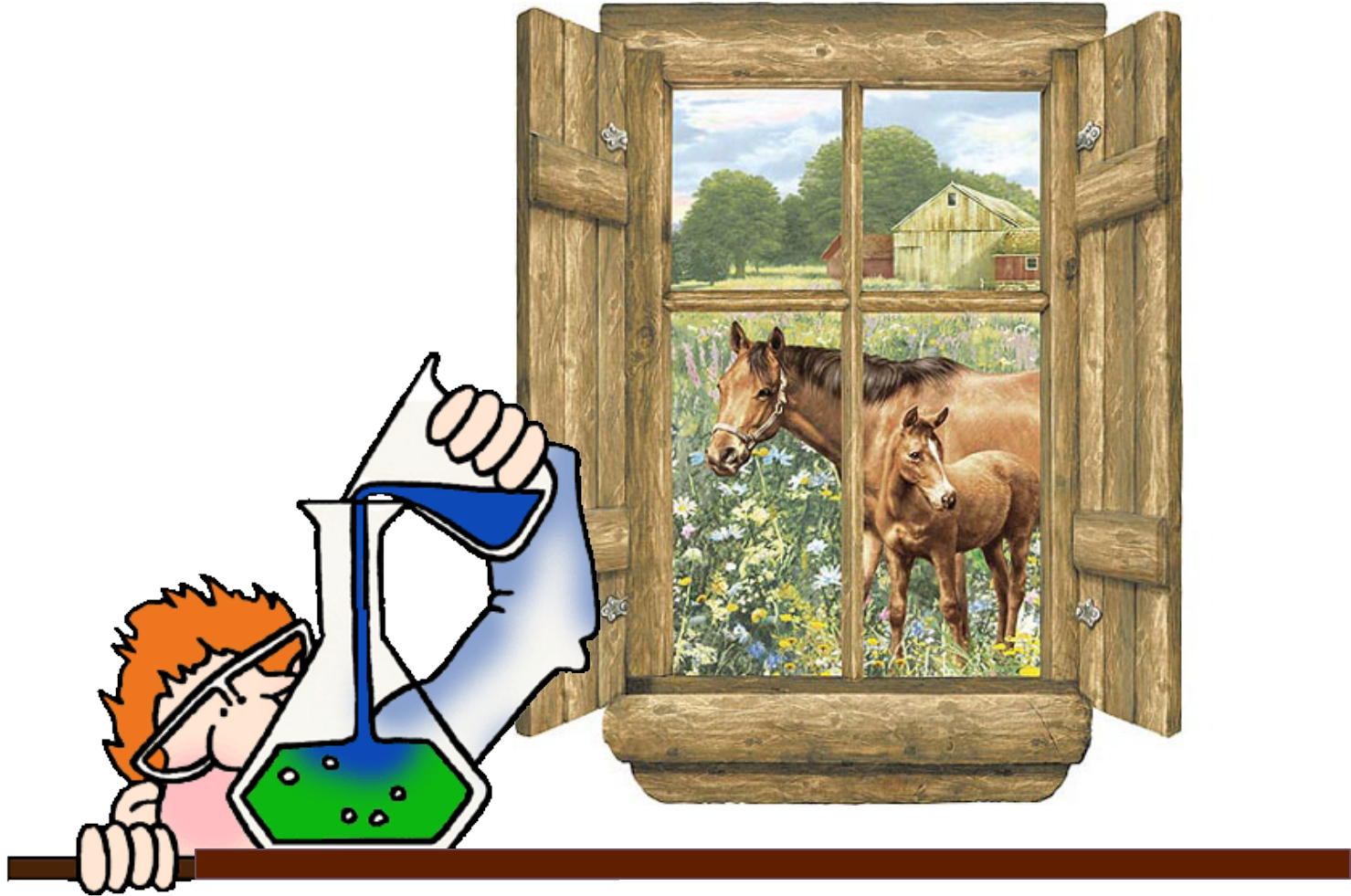




# Consciousness

That aspect of the Godhead that forms  
the self-aware essence of each  
Living Being  
and Inanimate Object.

# "Lab" Psi vs "Field" Psi





# Lab Psi - J.B. and Louisa Rhine

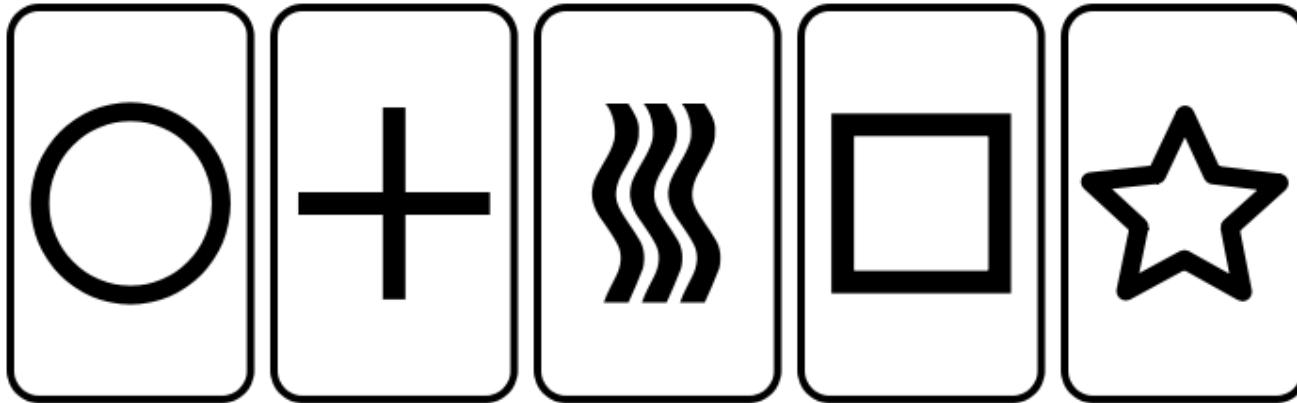


Duke University 1927



Quantitative experiments with Zener cards

# Lab Psi - Zener Cards



- ☆ Controlled, objective
- Reproducible
- +
- BOR-ing
- » prone to **Extinction** effect

# Field Psi - Missing Kittens

- ♥ Emotional, subjective
- 🔥 Spontaneous
- ” Anecdotal
- ❄ Irreproducible
- ! *Dramatic*



# Remote Viewing: Lab meets Field

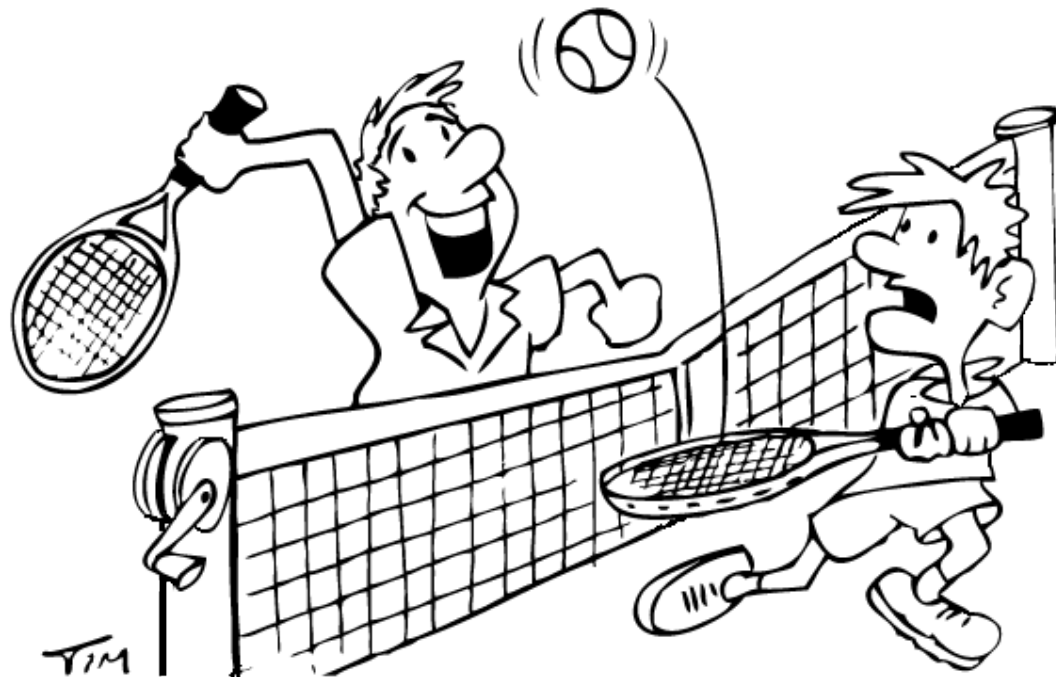
- Emotionally compelling
- Reproducible
- Qualitative  $p < .00001$
- Dramatic results
- training **effect**



“*Is psi more like physics or more like love?*”

*Russell Targ*





# Pseudoscience

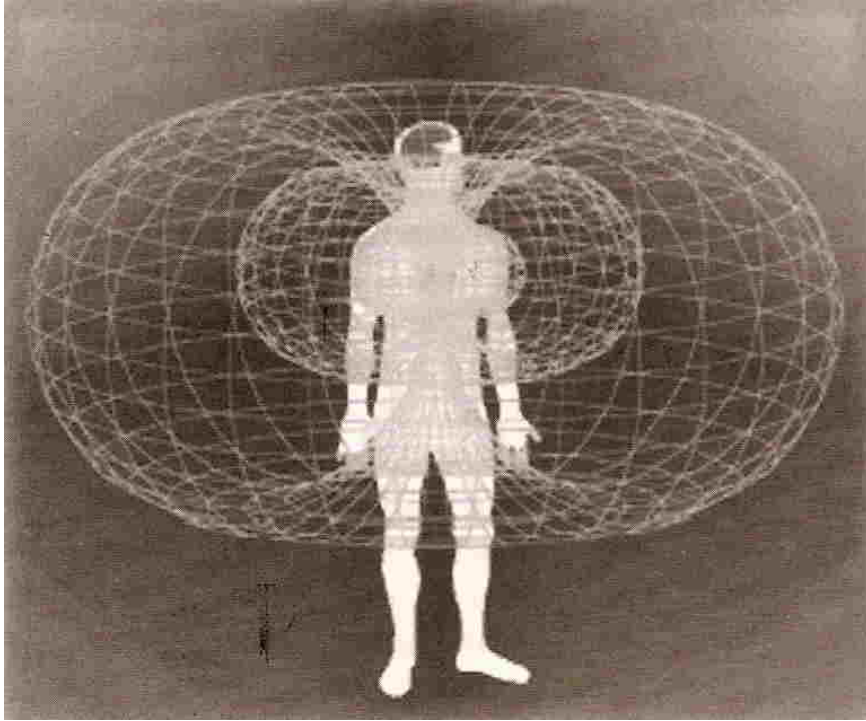
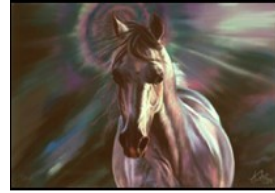


≡ Misapplication of scientific or scientific-sounding measurements and principles to sell a product or to prove, justify, or explain an observation, intuition, feeling, or belief.

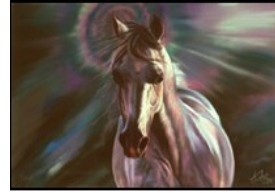
## **Examples:**

- ❖ Fad diets
- ❖ ECG as a measure of love
- ❖ Flaky or simplistic use of concepts such as “energy,” “left and right brain,” and “fields.”

# Electromagnetic Fields

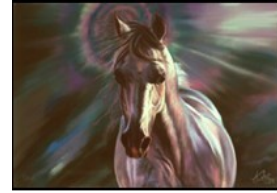


- Classical physics
  - time
  - distance
- 4-dimensional
- 1-way arrow of time

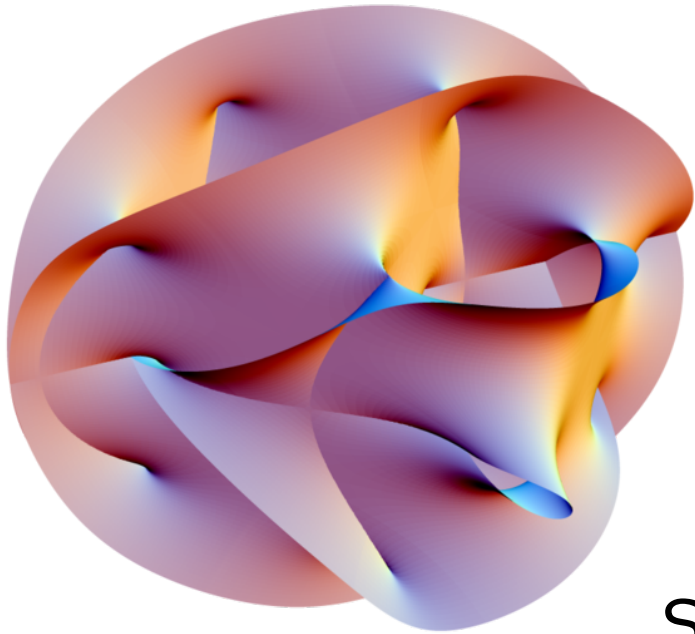


# Models of Consciousness: Geometries, Not Fields

- 🐎 No attenuation of signal over large distances
- 🐎 No attenuation of signal forward and backward in time
- 🐎 Not an “energy” or a “signal”



# The Sacred Geometry of Consciousness

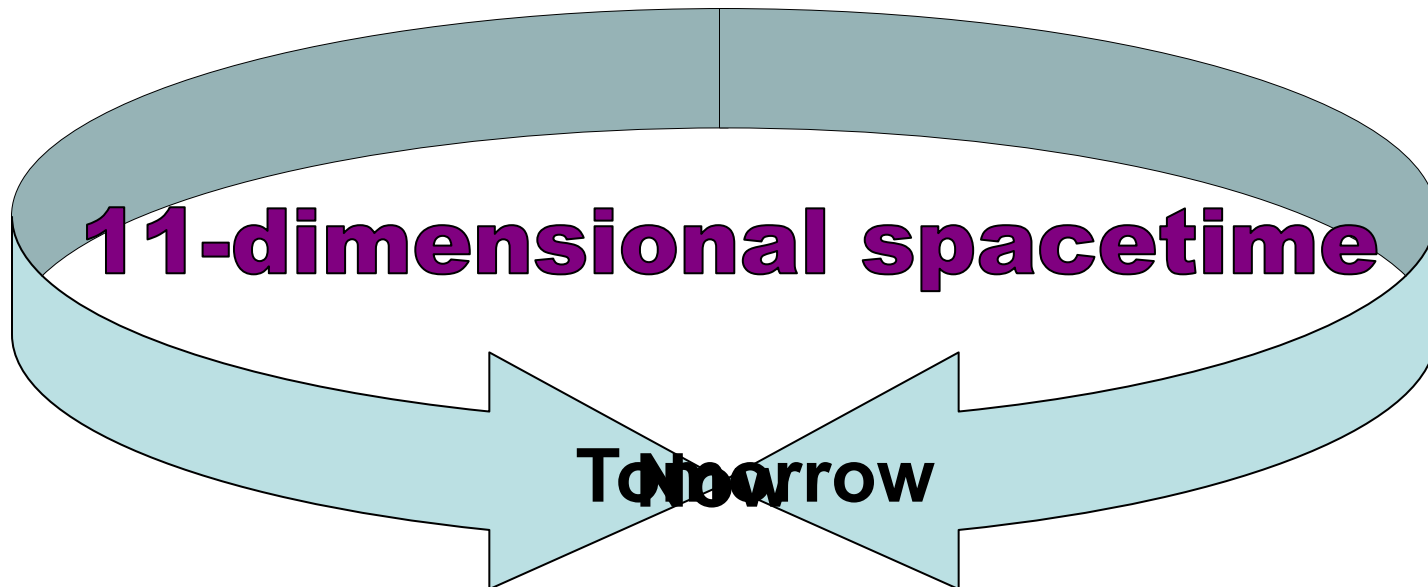
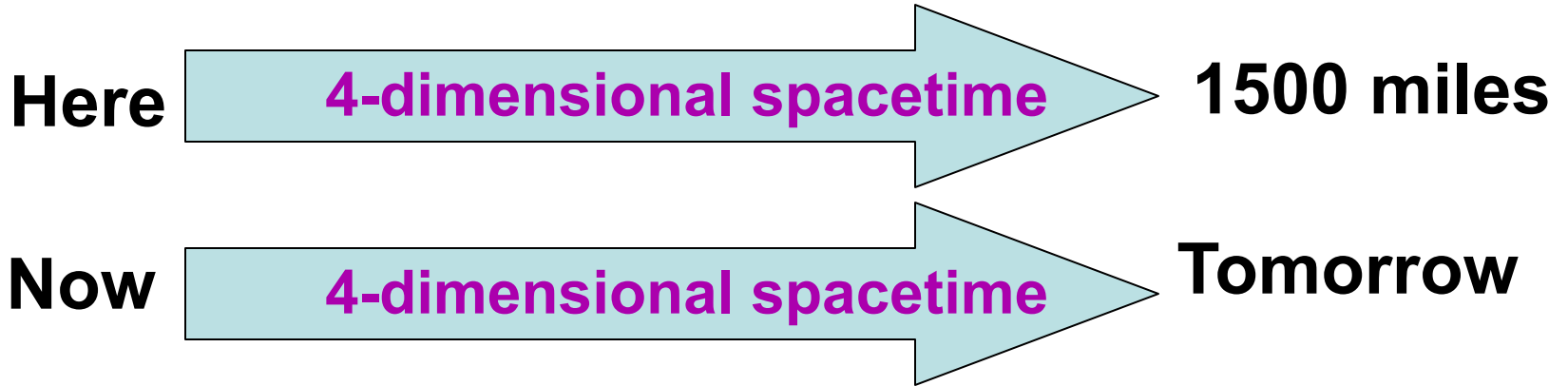


- “New” physics
- 11 Dimensional Theories
- 2-way arrow of time
- Non-locality

String, Superstring, Theory of Everything, Grand Unified Field Theory

**MODELS—NOT EXPERIMENTAL PROOF**

# Geometry of Psi





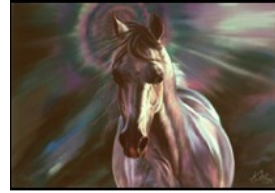
# Summary

1. Western scientific theory and methods are insufficient to prove, falsify, or predict the most magical interactions with horses.
2. Parapsychology theory and methods add literally other dimensions to understanding magic in relationships.
- 3. Development of psychic abilities for animal communication should be required for certification in equine-assisted learning and therapy.**



## References

- 🐾 Abbott, Edwin. *Flatland*—classic 1884 novella of 2D world venturing illegally into 3D consciousness
- 🐾 Blake, Henry. *Talking With Horses: A Study of Communication Between Man and Horse*
- 🐾 Kane, Beverley, Jean Millay and Dean Brown, eds. *Silver Threads—20 Years of Parapsychology Research*. New edition 2010\*
- 🐾 Mackay, Nicci. *Spoken in Whispers: The Autobiography of a Horse Whisperer*
- 🐾 \*Millay, Jean. *Radiant Minds*. 2010
- 🐾 Sheldrake, Rupert. *Dogs That Know When Their Owners are Coming Home*
- 🐾 Solisti-Mattelon, Kate. *Conversations With Horse*
- 🐾 Smith, Penelope. *Animal Talk*. <http://www.animaltalk.net/>
- 🐾 Targ, Russell and Hal Putoff. *Mind Reach*
- 🐾 Targ, Russell. [ESP Research.com](http://ESPResearch.com) with ESP trainer for iPhone



# ESP Experiment

- 🐎 Clairvoyance in the “now”
- 🐎 Clairsentience from the “past”
- 🐎 Precognition of the “future”